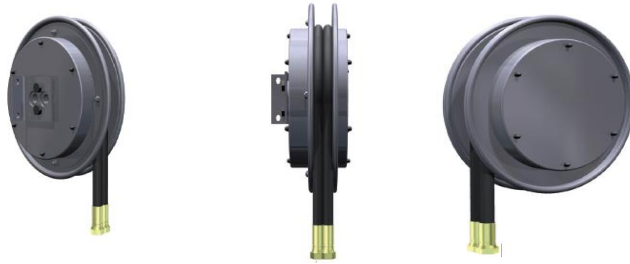




ENROULEURS RX



TYPE	COURSE	DIAM. DU FLEXIBLE	LONG. DU FLEXIBLE	PRESSION	
	<i>m</i>		<i>m</i>	<i>bar</i>	<i>kg</i>
RX30	1.9	3/8"	3	280	9
RX35	3.9	3/8"	5	280	9.5
RX40	6.4	3/8"	7.5	280	10
RX45	7.6	3/8"	9	280	29
RX52	10.6	3/8"	12	280	31.5

REFROIDISSEURS



TYPE	CAPACITE D'HUILE	VENTILATEUR	PRESSION	PROTECTION	BRUIT	
	<i>l min-max</i>	<i>∅ mm</i>	<i>bar</i>	<i>IP</i>	<i>dba</i>	<i>kg</i>
FCA 15-50	15-80	190	26	67	68	3,5
FCA 30-60	10-100	190	26	67	68	5
FCA 25-140	10-140	280	26	67	78	7
FCA 45-90	10-120	280	26	67	74	6
FCA 40-140	10-140	280	26	67	74	7
FCA 45-170	30-180	385	26	68	79	12
FCA 40-180	25-180	280	26	68	78	28
FCA 35-250	35-250	385	26	68	70	18